



MATRIX

JEE MAIN 2026

**Memory Based-Questions
and Analysis of
2nd April (Shift-1)**

FINAL EXAM - May 19
Time: 2:00 PM - 9:00 PM

t

Content

1. Memory-Based Questions
2. Key Details About the Exam
3. Overall Paper Analysis
4. Physics Paper Analysis
5. Mathematics Paper Analysis
6. Chemistry Paper Analysis
7. Tentative Percentile vs. Score Comparison

Note: This PDF may be updated from time to time. Please check regularly for the latest information.

This analysis is based on memory-based information provided by students who attended the exam. Real accurate analysis may vary and will be provided when the official question paper is released by the NTA.

Memory-Based Questions

Physics

Question 1: The dimension of $\frac{1}{2}\epsilon_0 E^2$ is

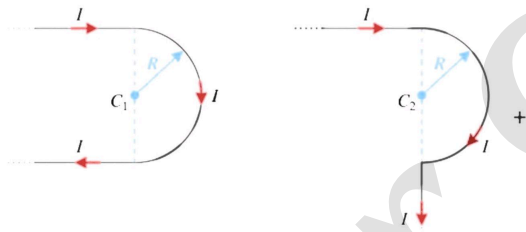
- 1) MLT^{-2}
- 2) $MLL^{-1} T^{-2}$
- 3) MLT^{-1}
- 4) $ML^{-1}T^{-1}$

Question 2: A wooden cubic block of relative density 0.4 is floating in water. Side of cubic block is 10 cm .

When a coin is placed on the block the dips 0.3 cm in equilibrium. Weight of coin is

- 1) 0.2 N
- 2) 30 N
- 3) 0.3 N
- 4) 3 N

Question 3: Consider two arrangements of wires, find ratio of magnetic field at centre of the semi-circular part.



- 1) $\frac{\pi+3}{\pi-1}$
- 2) $\frac{\pi-4}{\pi-2}$
- 3) $\frac{\pi+2}{\pi-1}$
- 4) $\frac{\pi-2}{\pi-1}$

Question 4: Q) $\theta = \frac{t^4}{4} - t^2$ find α at $t = 1$ Sec

Question 4 : Q) $\theta = \frac{t^4}{4} - t^2$ find α at $t = 1\text{Sec}$

Question 5 : $\vec{\gamma} = 10t^2\hat{i} + 5t^2\hat{j}$

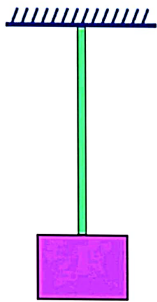
(1) $\vec{\beta} = 2\hat{i} + 1.5\hat{j}$

(2) $\vec{F} = 2\hat{i} + 3\hat{i}$

(3) $\vec{i} = 5\hat{k}$

(4) $\vec{\tau} = 20\hat{k}$

Question 6: Weight of string = w and weight of block = w and cross sectional area of string is A if stress at distance $L/3$ from top and is given by $\frac{w}{A} + \frac{2W}{\gamma A}$ determine γ ?



Question 7 In isobaric reversible process on a diatomic gas, ratio of $\Delta Q : \Delta U : W$ shall be

1) 7: 5: 2

2) 5: 3: 2

3) 3: 2: 1

4) 6: 5: 1

Question :8 The velocity of a particle is given as $\vec{v} = -x\hat{i} + 2y\hat{j} - 2\hat{k}$ m/s. The magnitude of acceleration at point (1, 2, 4) is _____ m/s²?

This analysis is based on memory-based information provided by students who attended the exam. Real accurate analysis may vary and will be provided when the official question paper is released by the NTA.

Question: 9 In circular motion, angular position θ and time t are related as $\theta = \frac{5t^4}{4} - \frac{6t^3}{3}$, then angular acceleration at $t = 10$ second is

- 1) 1180rad/s²
- 2) 130rad/s²
- 3) 1480rad/s²
- 4) 98rad/s²

Question: 10 The equation of a plane progressive wave is given by $y = 5 \cos \pi \left(200t - \frac{x}{150} \right)$. Where x & y are in cm and t is in seconds. Find the wave velocity for the given wave function.

Question 11 Angular momentum of the electron in a hydrogen atom is $\frac{3h}{2\pi}$, then find the energy of the electron in ____ ev.

Question 12: For an ideal gas having $C_p = 3R$ and $C_v = 2R$. Find work done by one mole of the gas in adiabatic expansion when pressure reduces from 8 bar to 1 bar. (Initial temperature = 140°C)

- 1) 140R
- 2) 70 R
- 3) 826 R
- 4) 413 R

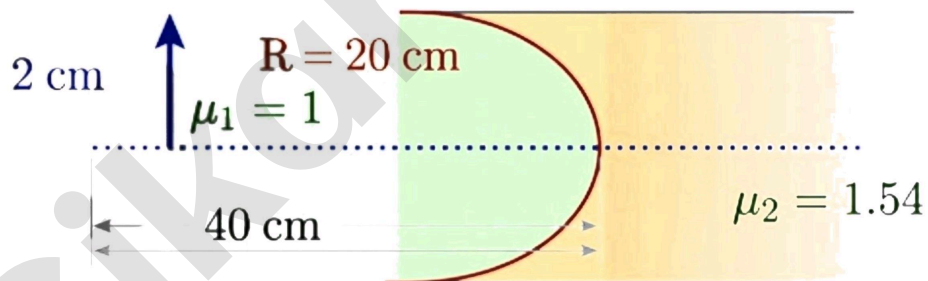
Question 13: In the YDSE experiment wavelength of light used is 620 nm and separation between slits is 0.2 mm . Find angular fringe width.

- 1) 3×10^{-4}
- 2) 3.1×10^{-3}
- 3) 1.2×10^{-3}
- 4) 6.2×10^{-4}

Question 14 : Photons of wavelength λ & 3λ incident on a metal surface if stopping potential for the ejected photoelectrons are $4V_0$ & V_0 respectively. Find threshold wavelength.

- 1) 6λ
- 2) 9λ
- 3) 2λ
- 4) 2λ

Question 15 : Determine height of image after refraction.

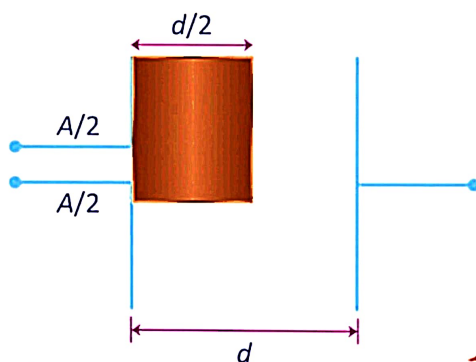


Question 16 : Find change in surface energy if **512** small drops of radius $r = 2 \text{ mm}$ merge into a single large drop.

(Surface tension = S).

- 1) $\pi 5 \times 7.168 \times 10^{-3}$ Joule
- 2) $\pi 5 \times 3.584 \times 10^{-3}$ Joule
- 3) $\pi 5 \times 1.792 \times 10^{-3}$ Joule
- 4) $\pi 5 \times 6.284 \times 10^{-3}$ Joule

Question 17 : One fourth volume of an empty capacitor of capacitance C_0 is filled with dielectric of constant $K = 5$. Surface area of dielectric is $A/2$ & width $d/2$. If $A \gg d^2$ then, new capacitance is



- 1) $\frac{3}{2} C_0$
- 2) $\frac{4}{3} C_0$
- 3) $\frac{5}{4} C_0$
- 4) $\frac{7}{6} C_0$

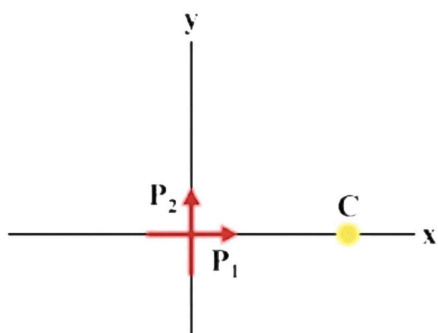
Question :18 Ratio of Electric field intensity on surface of sphere radius 18 cm to that on the surface of sphere of radius **8 cm** after closing of switch till equilibrium established



Question 19 : A container of initial volume 0.15 m^3 is expanded adiabatically from pressure 8 bar to final pressure 1 bar. If initial temperature is 140 K, then find work done by the gas :- ($C_p = 3R, C_v = 2R$) :-

This analysis is based on memory-based information provided by students who attended the exam. Real accurate analysis may vary and will be provided when the official question paper is released by the NTA.

Question 20 : If at point c net electric field intensity is at angle 60° with x axis. Determine P_2/P_1 .



Question 21: Wavelength used in single slit diffraction is 628 nm . Width of slit is 0.2 mm . Find the width of central maxima in degree:

- (1) 0.36°
- (2) 0.38°
- (3) 0.45°
- (4) 0.40°

Question 22: Thin symmetric prism of $\mu = 1.5$. Find ratio of incident angle and minimum deviation.:

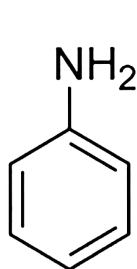
Chemistry

Question 1: The correct increasing order of bond length among the following is

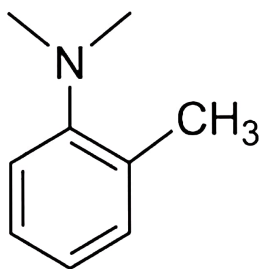
- 1 $O_2^+, O_2, O_2^-, O_2^{2-}$
- 2 $O_2^+, O_2, O_2^{2-}, O_2^-$
- 3 $O_2^{2-}, O_2^-, O_2, O_2^+$
- 4 $O_2^-, O_2^{2-}, O_2^+, O_2$

Question 2: For first order reaction, rate constant at $27^\circ C$ and $t^\circ C$ is 1.5×10^3 and 4.5×10^3 respectively. If the activation energy of reaction is 60 kJ then find temperature t .

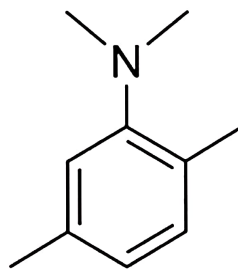
Question 3: Write the correct order of rate of reaction of following with PhN_2Cl



R



P



Q

- 1 $R > P > Q$
- 2 $P > R > Q$
- 3 $P > Q > R$
- 4 $Q > P > R$

Question 4: Compound of molecular formula C_5H_{10} can not decolorize Baeyer's reagent, how many monohalo products (Structural) are obtained by all isomers of C_5H_{10} .

Question 5: Which is decreasing priority order of given functional group

- (A) amide > aldehyde > ketone > amine > alkyne
- (B) aldehyde > amide > ketone > amine > alkyne
- (C) aldehyde > amide > amine > alkyne > ketone
- (D) alkyne > aldehyde > amide > amine > ketone

Question 6: Match List-I with List-II

List-I	List-II
Vitamin C	(A) Thiamine
Vitamin B ₁	(B) Riboflavin
Vitamin B ₆	(C) Ascorbic Acid
Vitamin B ₂	(D) Pyridoxin

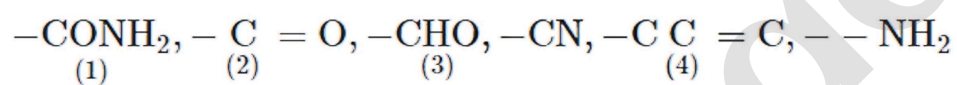
1 I-A, II-B, III-C, IV-D

2 I-C, II-A, III-D, IV-B

3 I-A, II-C, III-B, IV-D

4 I-C, II-D, III-A, IV-B

Question 7: Arrange following functional group in the increasing order of priority of functional group:



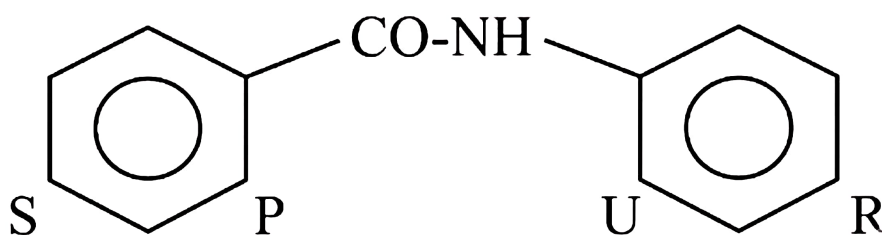
1 1 > 4 > 2 > 3 > 6 > 5

2 1 > 4 > 2 > 3 > 5 > 6

3 1 > 4 > 3 > 2 > 6 > 5

4 1 > 2 > 4 > 3 > 6 > 5

Question 8: Consider the electrophilic attack on given compound



- (A) Predominately at U position
- (B) Predominately at R position
- (C) Predominately at **P** position
- (D) Predominately at S position

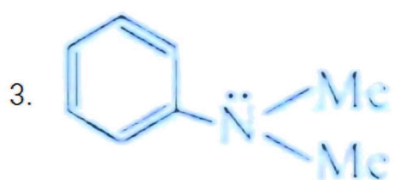
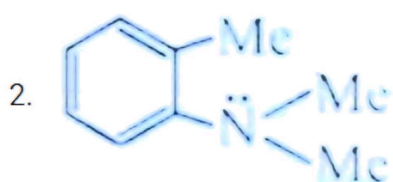
Question 9: Which compound gives apple green colour in flame test?

- 1 BaSO_4
- 2 $\text{Mn}_3(\text{PO}_4)_2$
- 3 $\text{Ca}_3(\text{PO}_4)_2$
- 4 $\text{Al}_2(\text{SO}_4)_3$

Question 10: One mole of alkane reacts with 8 mole of O_2 . The molecular formula of alkane is

- 1 C_4H_{10}
- 2 C_5H_{12}
- 3 C_7H_{14}
- 4 C_3H_8

Question 11: Arrange the following compound in decreasing order of coupling reaction with benzene diazonium chloride



Question 12: Distinguish the compounds given in list-I to list-II (Reagent)

List-I	List-II
(A) Acetophenone & acetaldehyde	(P) Neutral FeCl_3
(B) Phenol & Ethanol	(Q) Ammoniacal AgNO_3
(C) Diethyl amine & ethyl amine	(R) Alcoholic KOH/CHCl_3
(D) Propane & Cyclobutene	(S) $\text{Br}_2/\text{H}_2\text{O}$

Question 13: Solubility product of Ag_2CrO_4 & AgBr are $32x$ & $4y$ respectively. What is ratio of solubility of Ag_2CrO_4 & AgBr .

- (A) $\frac{x^3}{y^2}$
 (B) $\frac{x^3}{y^{1/2}}$
 (C) $\frac{x^{1/3}}{y^{1/2}}$
 (B) $\frac{y^3}{x^{1/2}}$

Question 14: Among the following elements -
Silicon (Si), Calcium (Ca), Nitrogen (N), Magnesium (Mg)

Arrange them in the decreasing order of first ionization energy (I.E.).

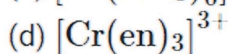
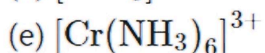
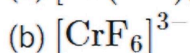
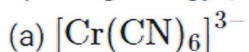
Question 15 : 18 g of H_2O reacts with x g of Fe to produce Fe_3O_4 . 'x' is, (Atomic mass of Fe = 56u)

- 1 84 g
- 2 63 g
- 3 42 g
- 4 51 g

Question 16: The orbit angular momentum of e in n^{th} shell of H atom is $\frac{3h}{\pi}$. The total energy of e is

- 1 – 0.38eV
- 2 – 3.4eV
- 3 – 0.544eV
- 4 -0.85 eV

Question 17: Arrange the following complexes in the increasing order of crystal field splitting energy (Δ_0)



1 (b) < (c) < (d) < (a)

2 (a) < (b) < (c) < (d)

3 (a) < (d) < (c) < (b)

4 (b) < (a) < (c) < (d)

Question 18: The relation between the time required for 100% completion (t_{100}) and 50% completion (t_{50}) for zero order and first-order reactions is:

(a) For zero order: $t_{100} = 2t_{50}$, for first order: $t_{100} = \infty$

(b) For zero order: $t_{100} = t_{50}$, for first order: $t_{100} = 2t_{50}$

(c) For zero order: $t_{100} = \infty$, for first order: $t_{100} = 2t_{50}$

(d) For zero order: $t_{100} = 2t_{50}$, for first order: $t_{100} = 2t_{50}$

Question 19: Calculate the energy required for the following process



Given: Ground state energy of Hydrogen is -13.6 eV/atom

1 13.6 eV/atom

2 122.4 eV/atom

3 54.4 eV/atom

4 30.6 eV/atom

Question 20: 20 g fluoroacetic acid is dissolved in 500 gm water. If depression in freezing point is 1°C , then calculate K_a for fluoroacetic acid. [Assume molality is same as molarity]

1 1.18×10^{-3}

2 1.5×10^{-5}

3 1.18×10^{-4}

4 1.2×10^{-6}

Mathematics

Question 1:

If $y = f(x)$ is the solution of the differential equation $(1 + \sin x) \frac{dy}{dx} + \cos x = 0$, such that $f(0) = 0$, then $f\left(\frac{\pi}{2}\right)$ is equal to:

- (1) $\ln 2$
- (2) $-\ln 2$
- (3) $\ln 3$
- (4) $\ln 4$

Question 2:

If eccentricity of an ellipse $\frac{x^2}{a^2} + \frac{y^2}{b^2} = 1$, which passes through point $(3, 4)$ is $\frac{\sqrt{5}}{3}$, then length of latus rectum of ellipse is:

- (1) $\frac{4\sqrt{5}}{3}$
- (2) $\frac{8\sqrt{5}}{3}$
- (3) $\frac{4\sqrt{7}}{3}$
- (4) $\frac{8\sqrt{7}}{3}$

Question 3:

How many seven-digit numbers can be formed using the digits 1, 2, 3, 4, and 5, such that each digit is used at least once?

- (1) 16800
- (2) 13200
- (3) 15200
- (4) 15800

Question 4:

Let $x \in [-\pi, \pi]$. Consider the set $S = \{x : \sin x(\sin x + \cos x) = a, a \in I\}$

where I denotes the set of integers.

The number of elements in the set S is:

- (1) 5
- (2) 10
- (3) 9
- (4) 4

Question 5:

Find the Range of $f(x) = \sin^{-1}\left(\frac{1}{x^2-2x+2}\right)$

- (1) $(0, \frac{\pi}{2})$
- (2) $[0, \frac{\pi}{2}]$
- (3) $(0, \frac{\pi}{2}]$
- (4) $[0, \frac{\pi}{2})$

Question 6:

The value of $\int_0^3 \frac{e^x + e^{-x}}{(|x|)!} dx$ equals (Here $[.]$ denotes the greatest integer function)

- (1) $\frac{1}{2}(e^2 + e^3 - e^{-2} - e^{-3})$
- (2) $e^2 - e^3 + e^{-2} - e^{-3}$
- (3) $\frac{1}{4}(e^2 + e^3 - e^{-2} - e^{-3})$
- (4) $\frac{1}{2}(e^2 + e - e^{-1} - e^{-2})$

Question 7:

If the roots of the equation

$x(x + 2) + (x + 1)(x + 3) + \dots + (x + (n - 1)) + (x + n + 1) = 4n$ are α and $\alpha + 2$. Then, the value of $|2\alpha + n|$ is:

Question 8:

Find midpoint of sides of triangle ABC be $(\frac{5}{2}, 7)$, $(\frac{5}{2}, 3)$ and $(4, 5)$ If its incenter is (h, k) then $3h + k$ is equal to:

Question 9:

$$\text{Let } k = \sin \frac{\pi}{18} \cdot \sin \frac{5\pi}{18} \cdot \sin \frac{7\pi}{18}.$$

Then, the value of $\sin \left(\frac{10k\pi}{3} \right)$ is equal to:

Question 10:

$$\lim_{x \rightarrow 2} \frac{\sin(x^3 - 5x^2 + ax + b)}{(\sqrt{x-1} - 1) \log_r(x-1)} = m, \text{ then } \mathbf{a} + \mathbf{b} + \mathbf{m} \text{ is equal to:}$$

Question 11:

$$\text{Let } \sum_{k=1}^n a_k = 6n^3, \text{ then } \sum_{k=1}^6 \left(\frac{a_{k+1} - a_k}{36} \right)^2 \text{ equal to:}$$

Question 12:

$$\text{Let } f(x) = \begin{cases} \left| \frac{\sin x}{x} \right|, & x \neq 0 \\ 1, & x = 0 \end{cases}. \text{ Then total number of critical point(s) in } x \in (-2\pi, 2\pi) \text{ is}$$

(1) 3

(2) 5

(3) 9

(4) 1

Question 13:

The value of $\sin \frac{\pi}{18} \cdot \sin \frac{5\pi}{18} \cdot \sin \frac{7\pi}{18}$ is equal to:

- (1) $\frac{1}{8}$
- (2) $\frac{1}{16}$
- (3) $\frac{1}{4}$
- (4) $\frac{1}{32}$

Question 14:

Consider two arithmetic progressions (A.P.s):

A.P.1: first term 1, common difference 5, and 101 terms.

A.P.2: first term 9, common difference 7, and 71 terms.

The number of common terms present in both A.P.s is:

- (1) 11
- (2) 14
- (3) 12
- (4) 13

Question 15:

Q) Let $|\vec{a}| = 2$, $|\vec{b}| = 3$, then maximum value of $3|3\vec{a} + 2\vec{b}| + 4|3\vec{a} - 2\vec{b}|$ is:

- (1) 36
- (2) 60
- (3) 48
- (4) 72

Question 16:

${}^{36}C_{r+1} = 6 \cdot \frac{{}^{35}C_r}{k^2-3}$ such that $S = \{(r, k)\}$ then number of elements in set S is:

- (1) 9
- (2) 4
- (3) 13
- (4) 7

Question 17:

The domain of $f(x) = \sqrt{\log_{0.6} \left(\frac{|2x-5|}{|x^2-4|} \right)}$ is

- 1. $(-\infty, -1 - \sqrt{10}) \cup \left(-1 + \sqrt{10}, \frac{5}{2}\right) \cup \left(\frac{5}{2}, \infty\right)$
- 2. $(-\infty, -1 - \sqrt{10}) \cup (\sqrt{10}, \infty)$
- 3. $\left(-1 - \sqrt{10}, \frac{5}{2}\right)$
- 4. $(-\infty, -1 - \sqrt{10}) \cup (\sqrt{10} - 1, \infty)$

Question 18:

A line passes through the point $(1, 1, 1)$ and is perpendicular to both the vectors

$\hat{i} + 2\hat{j} + 2\hat{k}$ and $2\hat{i} + 2\hat{j} + \hat{k}$.

Let (a, b, c) be the coordinates of the foot of the perpendicular drawn from the origin to this line.

Find the value of $34(a + b + c)$.

Question 19:

If $L_1 : \frac{x-a}{2} = \frac{y-2}{3} = \frac{z-b}{6}$ and $L_2 : \frac{x-b}{3} = \frac{y-7}{6} = \frac{z-1}{3}$ intersect in xy plane. Then the value of $|a + b|$ is

- (1) 15
- (2) 10
- (3) 14
- (4) 11

Question 20:

Evaluate the value of

$$I = \int_0^{2\sqrt{3}} \log_2(x^2 + 4) dx + \int_2^4 \sqrt{2^x - 4} dx$$

- (1) $2\sqrt{3}$
- (2) $4\sqrt{3}$
- (3) $6\sqrt{3}$
- (4) $8\sqrt{3}$

Important Details About the Exam

The National Testing Agency (NTA) is conducting the **Joint Entrance Examination (JEE) Main 2026 – Session 2** from **April 2 to April 8, 2026**. The **April 2 Morning Shift exam** was successfully held **today** from **9:00 AM to 12:00 PM** across various exam centres in India and abroad. Here are the other important exam details provided to you.

Particulars	Details
Mode of exam	Online (Computer-based test)
JEE Main exam duration	180 minutes (3 hours)
Types of questions	MCQs and Numerical value questions
Official website of JEE Main	https://jeemain.nta.nic.in/
JEE Main 2026 Marking Scheme	Correct Answer - Four marks (+4) Incorrect Answer- Minus one mark (-1) for MCQs, Zero (0) for Numerical value questions.

Subject-wise distribution of Questions and Marks:-

Subject	Section A (MCQs)	Section B Numerical value questions	Marks
Mathematics	20*	5*	100
Physics	20*	5*	100
Chemistry	20*	5*	100
Total	75		300

*Each subject will consist of a total of 25 questions, divided into two sections. Section A will have 20 Multiple-Choice Questions (MCQs), and Section B will contain 5 compulsory questions whose answers must be filled in as a numerical value. There will be negative markings for Section A (MCQs) but not for Section B (Numerical Value Questions). Answers in Section B should be rounded off to the nearest integer.

Overall Paper Analysis

- The JEE Main 2026 2nd April morning shift exam was of overall Easy to Moderate difficulty.
- The JEE Main 2026 April 2nd morning shift paper was easy compared to the January session.
- Chemistry and Physics were easy and doable, but Mathematics was comparatively more challenging than both Physics and Chemistry.
- **Subject-wise difficulty:**
 - ♦ **Mathematics > Physics > Chemistry**

- The Class 12 portion had more weightage than Class 11.
- A few assertion and reason-type questions were asked.

Questions asked from the following important topics

Physics:

- Two questions from Ray Optics.
- One Question from Modern Physics
- 3 Questions From Electrostatics.
- One Question from (Young's modulus) Mechanical Properties of Solids
- 2 Questions from Kinematics.
- 1 Questions from rotational motion.
- 1 Questions from thermodynamics.
- 1 Question from EMI
- 1 Question from Wave Optics
- 2 Questions from the unit and dimensions.
- 1 Question from semiconductor(from rectifier)
- 1 Question from the magnetic effect of electric current.

Maths:

- 2 Questions from Vector Algebra and 3D Geometry
- 1 Question from Trigonometry
- 1 Question from Straight lines
- 1 Question from Probability
- 2 Questions from Statistics
- 1 Question from Matrice
- 1 Question from Sequence & Series
- 1 Question from the Quadratic Equations

Chemistry:

- 3 questions from coordination compound
- 3 questions from chemical bonding
- 2 questions from salt analysis
- 1 question from biomolecule
- 1 question from the periodic table
- 1 question from ionic equilibrium

This analysis is based on memory-based information provided by students who attended the exam. Real accurate analysis may vary and will be provided when the official question paper is released by the NTA.

Physics Analysis

- The overall difficulty level of the Physics section was easy.
- Physics JEE Main 2nd April morning shift paper was easy compared to maths.
- The 2nd April morning shift Physics paper was easy compared to Session 1, 2026.
- A majority of questions were from Class 11 Physics topics.
- Most of the questions were simple, direct, and formula-based.
- Students were able to solve most of the questions without much difficulty.
- Overall, Physics was less time-consuming and a high-scoring section for students.

The physics paper was easy. Questions were asked about the following Topics:

- Two questions from Ray Optics.
- One Question from Modern Physics
- 3 Questions From Electrostatics.
- One Question from (Young's modulus) Mechanical Properties of Solids
- 2 Questions from Kinematics.
- 1 Questions from rotational motion.
- 1 Questions from thermodynamics.
- 1 Question from EMI
- 1 Question from Wave Optics
- 2 Questions from the unit and dimensions.
- 1 Question from semiconductor(from rectifier)
- 1 Question from the magnetic effect of electric current.

Maths Analysis

- The overall difficulty level of the Mathematics section was moderate.
- The Mathematics section was relatively "tougher" compared to the Chemistry and Physics sections.
- The Mathematics section was easier than the JEE Main 2025 January Session.
- The Mathematics section was similar to the JEE Main 2024.
- Overall, the Mathematics section was lengthier and time-consuming than the other sections.
- A significant number of questions in this session were more concept-driven rather than formula-based, testing their application skills.

Questions asked from the following important topics:

- 2 Questions from Vector Algebra and 3D Geometry
- 1 Question from Trigonometry
- 1 Question from Straight lines
- 1 Question from Probability
- 2 Questions from Statistics
- 1 Question from Matrices
- 1 Question from Sequence & Series
- 1 Question from the Quadratic Equation
- 1-2 Questions from Integral Calculus

Chemistry Analysis

- The Overall difficulty level of the Chemistry Section was very easy
- The chemistry section was easier than physics and maths
- Chemistry is easy compared to the January session
- The chemistry section was almost similar to JEE Main 2025
- Chemistry was doable and Ncert-based questions
- The chemistry had more assertion and reason-based questions.
- The weightage of Inorganic chemistry is more and has almost more than 10 questions
- Mixed question from inorganic and physical chemistry
- Organic had statement-based questions.
- Overall, the weightage of the three sections is Inorganic > Physical > Organic

Questions were asked about the following Topics:

- 3 questions from coordination compound
- 3 questions from chemical bonding
- 2 questions from salt analysis
- 1 question from biomolecule
- 1 question from the periodic table
- 1 question from ionic equilibrium

Tentative Percentile Vs Score

This analysis is based on memory-based information provided by students who attended the exam. Real accurate analysis may vary and will be provided when the official question paper is released by the NTA.

Since the paper was relatively “**Easy to Moderate**”, the higher percentile will be for a little lesser marks than that of the easy difficulty level papers.

Here is the tentative percentile vs score obtained for the exam.

Overall Percentile	JEE Main scores Difficulty level -Moderate
99.5	205-215
99.1	190-200
98.5	180-187

 **Predict Your JEE Main 2026 Rank & Secure Your Dream College – Instantly!** 

Get accurate insights with our expert tools: